

EXPLOSION-PROOF CONNECTION HEAD WITH SPRING-LOADED ASSEMBLY AND MOUNTING HARDWARE

How to build a part number:

To order an Applied Sensor Technologies temperature sensor, select the requirements for the categories listed below and fill in the corresponding boxes with your selection. Don't see exactly what you need? Give us a call!

SENSOR TYPE	ASSEMBLY STYLE	CONNECTION	CONNECTION LENGTH	SHEATH DIAMETER	SHEATH MATERIAL	TEMPERATURE RANGE	SHEATH LENGTH	OPTIONS

SENSOR TYPE (See page 2-4b for optional elements)

RTP1 – Platinum; DIN 0.00385; 100 ohm +/- 0.12% @ 0°C; 3-wire construction
(For dual element, add prefix "D"- e.g., DRTP1)

ASSEMBLY STYLE

77 – Sheath with cast aluminum head; spring-loaded in head; head CSA/FM approved for Class I, Division I, Groups B, C, D; Class II, Groups E, F, G, including union; screw cover with chain and gasketed o-ring. Ceramic terminal block; 1/2" NPT conduit and process connections

CONNECTION

H – Head only; 1/2" NPT (female) instrument connection
N – 1/2" NPT carbon steel nipple only
NU – 1/2" NPT carbon steel nipple and plated steel union
NUN – 1/2" NPT carbon steel nipples and plated steel union
Add suffix "**1S**" for 304 stainless steel nipples

CONNECTION LENGTH

– (e.g., 006=6 inch)
See chart below for standard available lengths.

SHEATH DIAMETER (in inches) (see page 2-4b for restrictions)

4 – 1/8 (0.125)
6 – 3/16 (0.188)
7 – 1/4 (0.250)
9 – 3/8 (0.375)

SHEATH MATERIAL

3 – 316 stainless steel

TEMPERATURE RANGE - Minimum and maximum operating temperatures

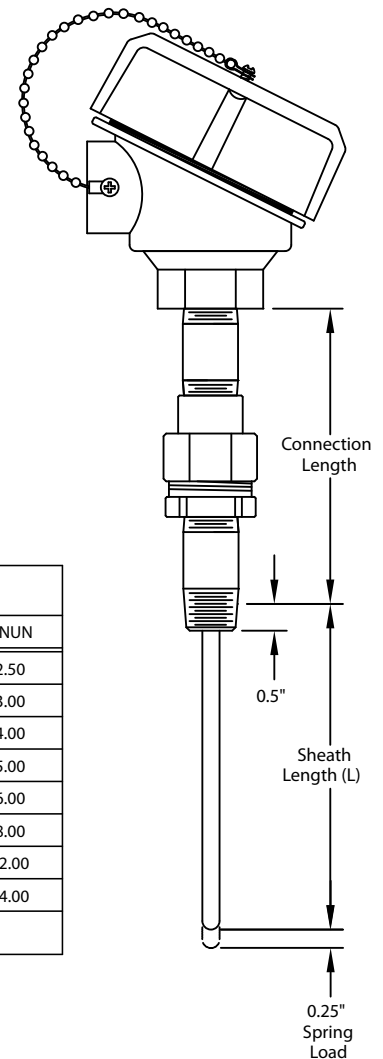
1 – -45 to 260°C (-50 to 500°F)
2 – -45 to 482°C (-50 to 900°F)
3 – -45 to 788°C (-50 to 1450°F)
4 – -200 to 260°C (-328 to 500°F)

SHEATH LENGTH (for lengths greater than L=36", consult AST)

L# – (e.g., L6 = 6 inch sheath)

OPTIONS – see page 2-4b

STANDARD AVAILABLE CONNECTION LENGTHS		
N	NU	NUN
N/A	2.00	2.50
0.50	2.50	3.00
1.00	3.00	4.00
1.50	3.50	5.00
2.00	4.00	6.00
3.00	5.00	8.00
5.00	7.00	12.00
6.00	8.00	14.00
DIMENSIONS ARE GIVEN IN INCHES		



STYLE 77

AVAILABLE OPTIONS and MODIFICATIONS

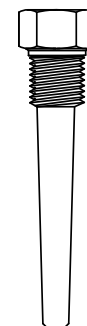
ASSEMBLY OPTIONS		
Option Codes	Description	
TAG1	Stainless steel tag and wire	
CAL1	NIST traceable calibration [specify point(s)]	
CRT1	Certificate of conformance	
TRANSMITTERS		
See Style 48 for available transmitters		
OPTIONAL ELEMENTS		
RTDs are standardly platinum, 100-ohm, DIN-curve elements with a 0.00385 alpha.		
Option Code	Accuracy (at 0°C)	Construction
RTP1 (std.)	±0.12%	3-wire
RTP1A	±0.06%	3-wire
RTP1AA	±0.01%	3-wire
RTP6	±0.12%	2-wire
RTP7	±0.12%	4-wire
RTP7A	±0.06%	4-wire
RTP7AA	±0.01%	4-wire
Notes:		
1. For dual element, add prefix "D" (e.g., DRTP6)		
2. Additional materials, curves and resistance values are available - see Capabilities brochure.		

EXPLOSION-PROOF TERMINAL HEAD OPTIONS							
Option Code	Process Connection			Conduit Connection			
Cast aluminum; screw cover with chain; o-ring gasket; ceramic terminal block; FM/CSA approved for Class I Div. 1, Groups B, C and D; Class II Groups E, F and G (Gasket rated to 100°C exposure); internal ground screw							
HD71	1/2"			3/4"			
Same as above, except epoxy-coated							
HD80	1/2"			1/2"			
HD81	1/2"			3/4"			
Smallest Diameter Sheath Available By Sensor Type and Temperature Range							
SINGLE							
Temp Range	RTP 1	RTP 1A	RTP 1AA	RTP 6	RTP 7	RTP 7A	RTP 7AA
1	1/8	1/8	1/8	1/8	3/16	3/16	3/16
2	3/16	3/16	3/16	3/16	3/16	3/16	3/16
3	3/16			3/16	3/16		
4	1/8			1/8	3/16		
DUAL							
Temp Range	DRTP 1	DRTP 1A	DRTP 1AA	DRTP 6	DRTP 7	DRTP 7A	DRTP 7AA
1	3/16	3/16	3/16	3/16			
2	1/4	1/4	1/4	3/16			
3	1/4			1/4			
4	3/16			3/16			

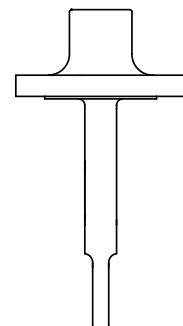
Note: See Accessories section for outline drawings and additional specs.

THERMOWELLS & PROTECTION TUBES

For a complete offering of metal, ceramic and composite material thermowells and protection tubes, please see the Thermowell and Protection Tube sections.



H260 THERMOWELL



F260 THERMOWELL